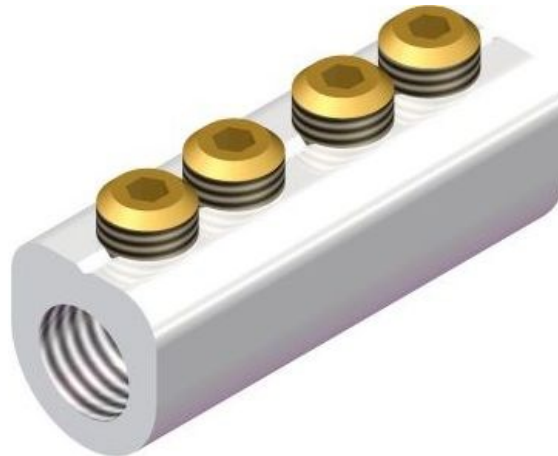


MF4 Hybrid Connectors - 'D' Section



Principle Application:

Stranded and solid shaped service conductors.

Range:

| Product Reference (Part Number) | Type | Core C.S.A. (mm ²) | |
|------------------------------------|------------------|--------------------------------|-----|
| | | Min | Max |
| MF4/23 (51801-44) | Straight Through | 6* | 16 |
| MF4/26 (51801-23) | Straight Through | 6* | 16 |
| MF4/27 (51801-24) | Straight Through | 6* | 16 |

Note: For jointing other core configurations/sizes please contact Sicame Engineering Dept

The **Sicame MF4** hybrid range of mechanical connectors are designed for straight connections on stranded or solid service cables. The aluminium connector yoke is electro-tinned as standard and is supplied with brass grub screws making it suitable for jointing copper/aluminium, sector/circular shaped conductors.

MF4 Hybrid Connectors - 'D' Section

Secondary Application:

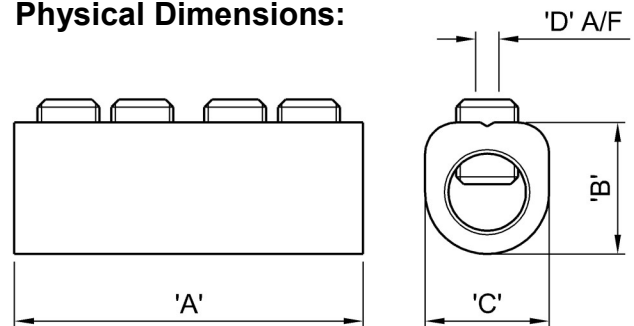
Stranded and solid circular conductors.

Range:

| Product Reference (Part Number) | Type | Maximum Core C.S.A. (mm ²) | |
|------------------------------------|------------------|--|----------|
| | | Solid | Stranded |
| MF4/23 (51801-44) | Straight Through | 35 | 35 |
| MF4/26 (51801-23) | Straight Through | 35 | 35 |
| MF4/27 (51801-24) | Straight Through | 35 | 35 |

* Note: Conductors below 6mm² should be doubled and, if necessary, doubled again to achieve a satisfactory cross sectional area.

Physical Dimensions:



| Product Reference (Part Number) | Dimensions (mm) | | | |
|------------------------------------|-----------------|------|------|-----|
| | 'A' | 'B' | 'C' | 'D' |
| MF4/23 (51801-44) | 35.0 | 14.0 | 11.7 | 3.0 |
| MF4/26 (51801-23) | 55.0 | 14.0 | 11.7 | 3.0 |
| MF4/27 (51801-24) | 84.0 | 14.0 | 11.7 | 3.0 |

Material:

Body: Aluminium Alloy (Tinned)

Screws: Brass

Test Specification:

BS EN 61238-1 : 2003 Compression and Mechanical Connectors for power cables for rated voltages up to 36 kV. Test Methods and Requirements.
Test report numbers—TTR/323, TTR/319, TTR/334

Fitting Instructions:

1. Strip the core insulation equal to the length of the connector + 3mm.
2. Thoroughly abrade and clean all conductors to be jointed.
3. Align cores within connector and tighten screws on each side of the connector consecutively, until tight.

Note: * Conductor cores 4mm² and below should be doubled, and if necessary doubled again, to achieve the necessary cross-sectional area.