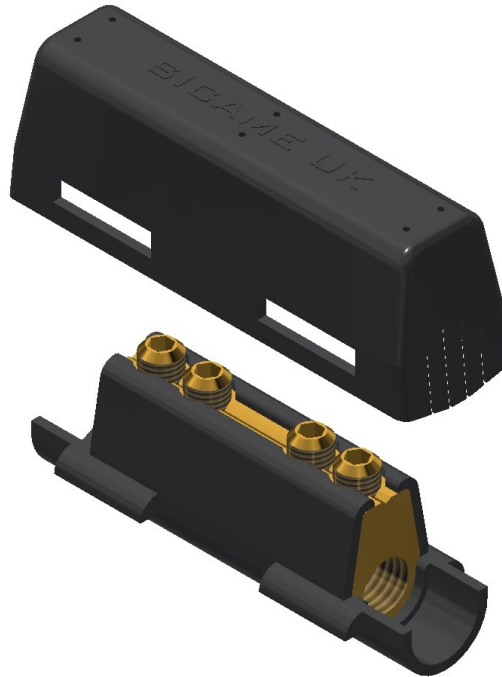


Straight Mechanical
Ferrule - Fully Insulated

MECHANICAL CONNECTORS

MF4/6/SHR Connector



Principle Application:

Stranded and solid shaped service conductors.

Range:

Product Reference (Part Number)	Type	Core C.S.A. (mm ²)	
		Min	Max
MF4/6/SHR (51810-04)	Moisture Blocked	6*	16

Note: For jointing other core configurations/sizes please contact Sicame Engineering Dept

The **Sicame MF4/6/SHR** mechanical connector is designed for straight connections on stranded, solid, circular or sector shaped service conductor cores.

It comes complete with a factory fitted lower polypropylene shroud and 'snap on' upper shroud thereby providing a fully insulated connector assembly.

©COPYRIGHT

Sicame UK Ltd operates a continuous product design development and improvement programme and offers active co-operation establishing satisfactory procedures and systems to meet new or unusual jointing situations. The company reserves the right to introduce modifications to the above designs and specifications without prior notice.

sicame
UK

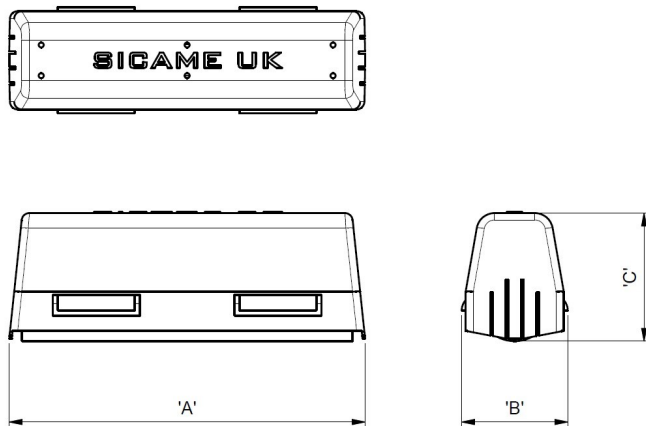
1.51h

MF4/6/SHR Connector

Secondary Application:

Stranded and solid circular conductors

Physical Dimensions:



Range:

Product Reference (Part Number)	Dimensions (mm)		
	'A'	'B'	'C'
MF4/6/SHR (51810-04)	70.0	21.0	25.0

Material:

Copper Alloy

Test Specifications:

BS4579 : Pt 1 : 1970, BS4579 : Pt 3 : 1976

Fitting Instructions:

1. Cut the service cables to length and strip the core insulation equal to half the length of connector + 3mm.
2. Thoroughly abrade all conductors to be jointed.
3. Align cores within connector and tighten screws on each side of the connector consecutively, until tight, using a 3mm AF tightening tool.