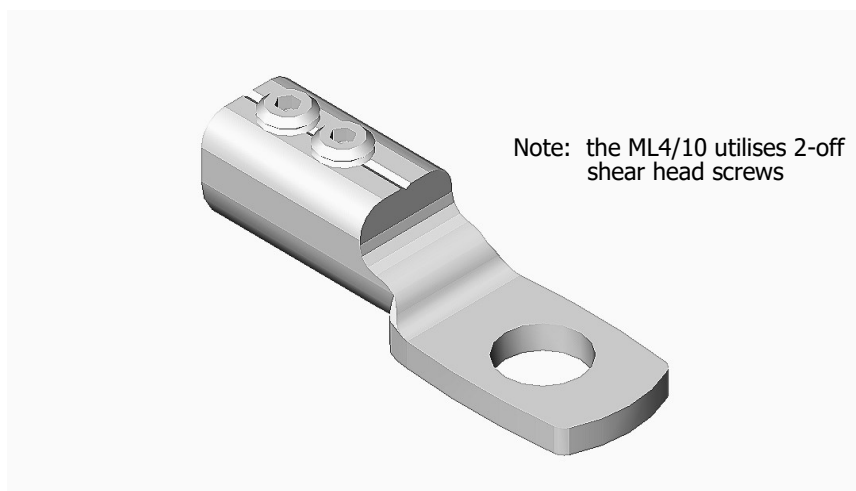


**ML4 Connectors - 'D' & Heatshrink
Section**



Principle Application

Termination of stranded/solid circular cored conductors.

Range

Product Reference (Part Number)	Core csa (mm ²)				Stud Size	Approx. Unit Weight (grams)
	Stranded		Solid			
	Min	Max	Min	Max		
ML4/1-6 (51801-82)	6*	25	16	35	M6	
ML4/1-10 (51903-85)	6*	25	16	35	M10	
ML4/2-10 (51905-41)	16	50	16	70	M10	
ML4/2-12 (51905-24)	16	50	16	70	M12	
ML4/9-12	35	70	35	95	M12	
ML4/9-16 (51903-68)	35	70	35	95	M16	
ML4/10-12 (51903-40)	35	95	35	120	M12	
ML4/10-16	35	95	35	120	M16	

Note: For jointing other core configurations/sizes please contact Sicame Engineering Department

The **Sicame ML4** range of mechanical connectors are designed for the termination of stranded/solid, circular/shaped conductor cores.

The mechanical lugs are manufactured in copper alloy and suitable for jointing either copper or aluminium cored conductor.

ML4 Connectors - 'D' & Heatshrink Section

Secondary Application

Termination of stranded/solid shaped cored conductors.

Range	Product Reference (Part Number)	Core csa (mm ²)				Stud Size	Approx. Unit Weight (grams)
		Stranded		Solid			
		Min	Max	Min	Max		
	ML4/1-6 (51801-82)	6*	16	16	16	M6	
	ML4/1-10 (51903-85)	6*	16	16	16	M10	
	ML4/2-10 (51905-41)	16	50	16	50	M10	
	ML4/2-12 (51905-24)	16	50	16	50	M12	
	ML4/9-12	35	70	35	50	M12	
	ML4/9-16 (51903-68)	35	70	35	50	M16	
	ML4/10-12 (51903-40)	35	70	35	70 (4-C only)	M12	
	ML4/10-16	35	70	35	70 (4-C only)	M16	

Note: For jointing other core configurations/sizes please contact Sicame Engineering Department

Material

Copper Alloy

Test Specifications

BS4579 : Pt 1 : 1970 &

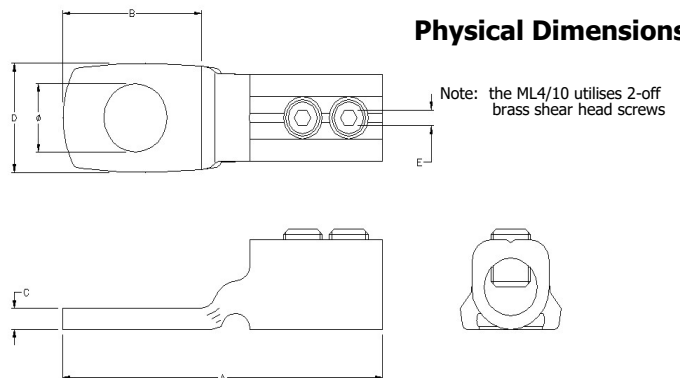
BS4579 : Pt 3 : 1976

Fitting Instructions

1. Cut the service cables to length and strip the core insulation equal to the length of bore +3mm.
2. Thoroughly abrade the conductor core.
3. Fully insert conductor core within barrel and tighten screws consecutively, until tight.

* Note: Conductor cores below 6mm² should be doubled, and doubled again (if necessary) to achieve a satisfactory cross sectional area.

Physical Dimensions



Product Reference (Part number)	Dimensions (mm)					
	A	B	C	D	E (A/F)	Æ
ML4/1-6 (51801-82)	58.0	26.0	4.0	15.0	3.0	6.4
ML4/1-10 (51903-85)	58.0	26.0	4.0	15.0	3.0	10.5
ML4/2-10 (51905-41)	66.0	28.0	4.0	21.0	3.0	10.5
ML4/2-12 (51905-24)	66.0	28.0	4.0	21.0	3.0	13.0
ML4/9-12	66.0	28.0	4.0	21.0	3.0	13.0
ML4/9-16 (51903-68)	66.0	28.0	4.0	21.0	3.0	16.5
ML4/10-12 (51903-40)	84.0	29.0	4.0	21.0	13.0	13.0
ML4/10-16	84.0	29.0	4.0	21.0	13.0	16.5