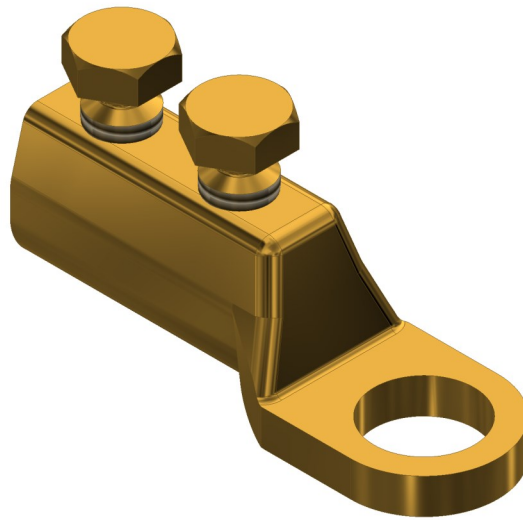


**ML4 Connectors**



**Principle Application**

Termination of stranded/solid circular cored conductors and earth screens of 11KV polymeric conductors.

**Range**

Product Reference (Part Number)	Core csa (mm <sup>2</sup> )				Stud Size
	Stranded		Solid		
	Min	Max	Min	Max	
ML4/12-12 (51905-25)	6*	95	16	120	12
ML4/12-16 (51905-76)	6*	95	16	120	16
ML4/13-16 (3396-067)	35	120	35	150	16
ML4/14-12 (51905-28)	6*	70	16	95	12
ML4/14-16	6*	70	16	95	16

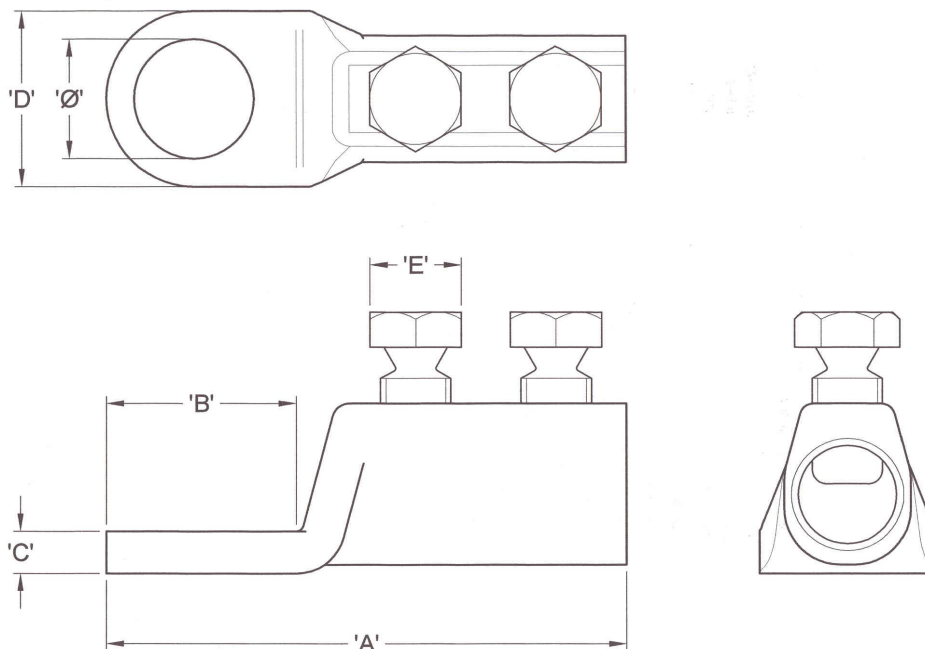
Note: For jointing other core configurations/sizes please contact Sicame Engineering Department

The **Sicame ML4** range of mechanical connectors are designed for the termination of stranded/solid, circular conductor cores. Also used for the termination of earth screens of 11KV polymeric conductors.

The mechanical lugs are manufactured in copper alloy and suitable for jointing either copper or aluminium cored conductor.

**ML4 Connectors**

**Physical Dimensions**



Product Reference (Part Number)	Dimensions (mm)				
	A	B	C	D	E
ML4/12-12 (51905-25)	71.0	24.0	6.0	21.0	13
ML4/12-16 (51905-76)	74.0	27.0	6.0	25.0	17
ML4/13-16 (3396-067)	86.0	30.5	8.0	32.0	17
ML4/14-12 (51905-28)	71.0	24.0	6.0	21.0	13
ML4/14-16	74.0	27.0	6.0	25.0	17

**Material**

Copper Alloy

**Test Specifications**

BS4579 : Pt 1 : 1970 & BS4579 : Pt 3 : 1976

**Fitting Instructions**

1. Cut the service cables to length and strip the core insulation equal to the length of bore +3mm.
2. Thoroughly abrade the conductor core.
3. Fully insert conductor core within barrel and tighten screws consecutively, until tight.

\* Note: Conductor cores below 6mm<sup>2</sup> should be doubled, and doubled again (if necessary) to achieve a satisfactory cross sectional area.