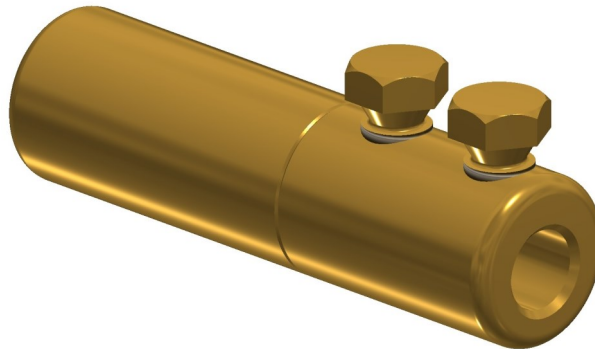


Mechanical termination with moisture / contaminant block for medium voltage applications

MECHANICAL CONNECTORS

TI Brass Thimble



Principle Application:

Termination of solid circular cored conductors.

Range

Connector Reference	Core C.S.A. (mm ²)
	Solid
TI	95

*Conductor cores 10mm² and below should be doubled to achieve the necessary cross sectional area.

The TI mechanical thimble incorporates an integral moisture block and comes complete with core stripping guides.

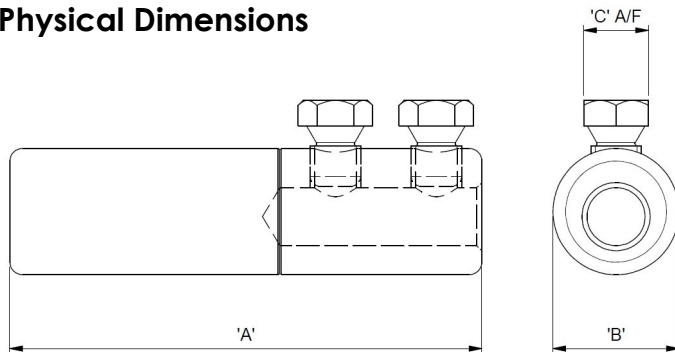
Suitable for all cable voltages up to and including 11000 volts.

Mechanical termination lug
with moisture / contaminant
block for medium voltage
applications

MECHANICAL CONNECTORS

TI Brass Thimble

Physical Dimensions



Connector Reference	Dimensions (mm)		
	'A'	Ø'B'	'C' A/F
TI	93.5	25	13

Material:

Brass

Fitting instructions:

1. Strip insulation from the core equal to the depth of the bore guide + 5mm.
2. Thoroughly abrade exposed conductor core. (See note).
3. Fully insert the cable core into connector body.
4. Tighten the shear bolts consecutively one turn at a time until all the heads have sheared.

Note: When jointing copper conductor, wrap the supplied brass gauze around the core prior to installation.

Important: Please note that when using the 'TI' Terminations in joints normally rated in excess of 3.3KV, it is essential that the Jointing System Supplier's instructions for stress relieving and re-insulation techniques are strictly adhered to.

©COPYRIGHT

Sicame UK Ltd operates a continuous product design development and improvement programme and offers active co-operation establishing satisfactory procedures and systems to meet new or unusual jointing situations. The company reserves the right to introduce modifications to the above designs and specifications without prior notice.

sicame
UK

2.12m

FEBRUARY 2016