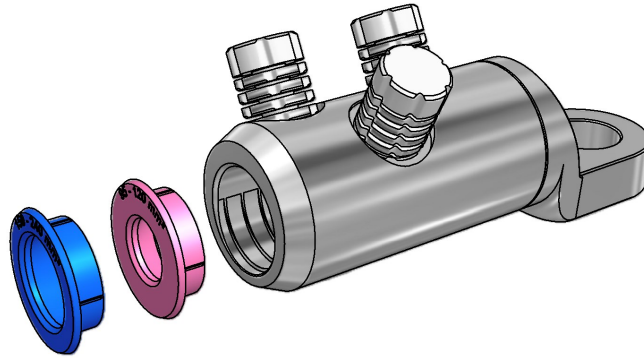


Mechanical Termination  
with Moisture/Contaminant  
Block for Medium/High  
Voltage Applications

## MECHANICAL CONNECTORS







### 'EUML' Aluminium Terminations



#### Principle Application:

Termination of circular stranded aluminium or copper conductors for all cable voltages up to and including 42kV.

#### RANGE:

Connector Reference (Part Number)	Internal Bore (mm <sup>2</sup> )	Cable Range (mm <sup>2</sup> )						Stud Size (mm)	Cable Centralising Ring (s)	
									Colour	Range (mm <sup>2</sup> )
		Stranded Circular (mm <sup>2</sup> )	Solid Circular (mm <sup>2</sup> )	Solid Sector 3 core (mm <sup>2</sup> )	Solid Sector 4 core (mm <sup>2</sup> )	Stranded Sector	Compacted Circular			
<b>EUML0-12</b> (3395-477)	13	16.95 (# 6-3/0)	16.95	50	50-70	35-75	16-95	12	White x 1 Green x 1	16-25 35-50
<b>EUML1-12</b> (3395-476) <b>EUML1-16</b>	16	35-150 (# 2-300 kcmil)	35-150	25-95	25-95	50-120	35-150	12	Orange x 1 Purple x 1	35-50 70-95
<b>EUML2-12</b> (3395-474) <b>EUML2-16</b>	21	50-240 (1 AWG-450 kcmil)	50-240	50-150	50-185	50-240	50-240	12 16	Yellow x 1 Red x 1	50-95 120-150
<b>EUML2.5-12</b> <b>EUML2.5-16</b> (3395-475) <b>EUML2.5-20</b>	26	95-400 (3/0-750 kcmil)	95-400	185-240	185-300	185-240	95-400	12 16 20	Pink x 1 Blue x 1	95-120 150-240
<b>EUML3-12</b> (3395-473) <b>EUML3-16</b> (3395-472) <b>EUML3-20</b> (3395-471)	30	240-500 (450-900 kcmil)	240-500	-300	-	240-300	240-500	12 16 20	Brown x 1	240-300
<b>EUML8-12</b> <b>EUML8-16</b> (3395-470) <b>EUML8-20</b> (3395-469)	34	400-630 (800-1250 kcmil)	400-630	-	-	300-400	400-630	12 16 20	-	-
<b>EUML9-16</b> (3395-468) <b>EUML9-20</b> (3395-467)	43	800-1000 (1550-1950 kcmil)	800-1000	-	-	-	800-1000	16 20	-	-



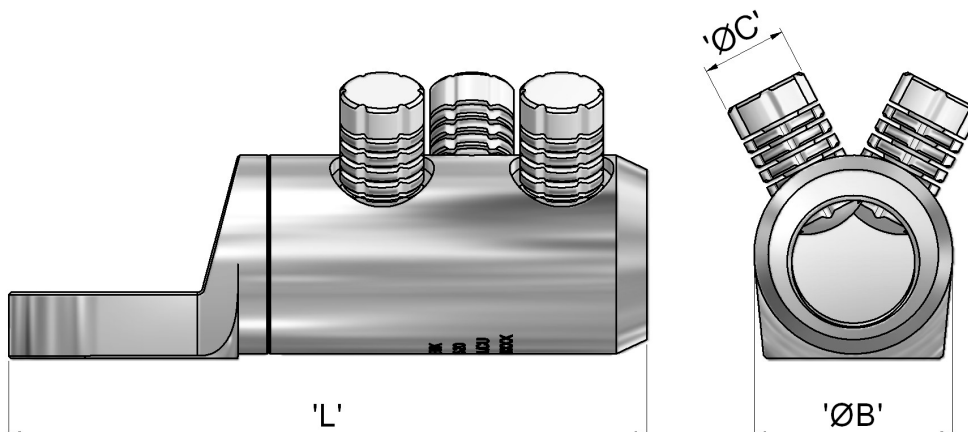
JTS/27 (M18)  
JTS/32 (M12)  
1/2"sq Driver



JTS/24 (M18)  
JTS/31 (M12)  
17 A/F Driver

Mechanical Termination  
with Moisture/Contaminant  
Block for Medium/High  
Voltage Applications

### 'EURL' Aluminium Terminations



Connector Reference (Part Number)	Dimensions (mm)		
	'L'	'ØB'	'ØC'
EURL0	65	30	M12 x 1
EURL1	80	28	M12 x 2
EURL2	105	34	M18 x 2
EURL2.5	135	42	M18 x 3
EURL3	143	47	M18 x 3
EURL8	143	51	M18 x 3
EURL9 (51903-79)	153	63	M18 x 4

**Material:** Aluminium Alloy (Electro-Tinned)

**Test Specification:** BS EN 61238-Class A

**Test Report No:** TTR/345

#### Fitting instructions:

1. Strip insulation from the core equal to the depth of the bore.
2. Wire brush the exposed conductor cores and wipe clean (optional).
3. Fit the appropriate sized cable centralising ring (if required).  
\* **NOTE:** Not required for LV cable cores.
4. Align and position the conductor core in the bore ensuring that the core is fully inserted.
5. Fit the universal shear screws within the connector and torque tighten one turn at a time, using the correct socket, until the bolts have sheared.

©COPYRIGHT

Sicame UK Ltd operates a continuous product design development and improvement programme and offers active co-operation establishing satisfactory procedures and systems to meet new or unusual jointing situations. The company reserves the right to introduce modifications to the above designs and specifications without prior notice.

**sicame**  
UK

2.21f

JUNE 2020