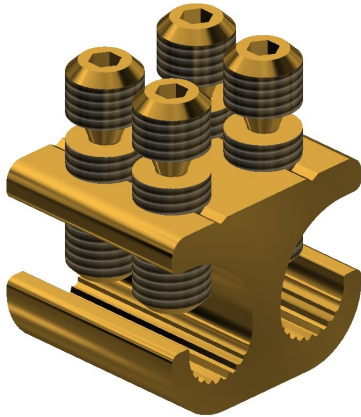


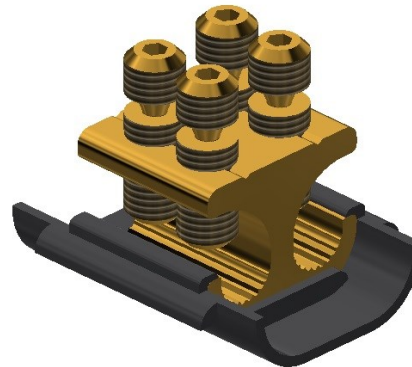
**MB21/3 & MB21/3/SHR Connector**



**MB21/3**



**MB21/3/SHR**



**Principle Application:**

Stranded and solid circular conductors.

**Range:**

Product Reference (Part Number)	Type	Core C.S.A. (mm <sup>2</sup> )	
		Min	Max
MB21/3 & MB21/3/SHR (51810-12) & (51810-01)	Branch	4*	35

Note: For jointing other core configurations/sizes please contact Sicame Engineering Dept

The **Sicame MB21/3** mechanical connector is designed for service branch connections on stranded or solid cable. The connector is manufactured in copper alloy for suitability of jointing both copper and aluminium conductor cores and comes complete with 'shear off' 3mm AF grubscrews.

The **Sicame MB21/3/SHR** mechanical connector has a factory fitted lower polypropylene shroud with a 'snap on' upper to fully insulate the assembled connector.

**Secondary Application:**

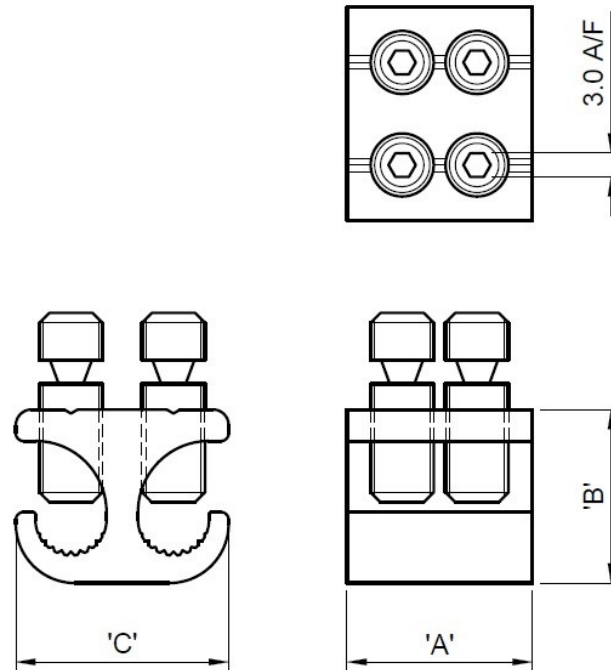
Stranded and solid shaped service conductors.

Product Reference (Part Number)	Type	Core C.S.A. (mm <sup>2</sup> )	
		Min	Max
MB21/3 & MB21/3/SHR (51810-12) (51810-01)	Branch	4*	35

Note: For jointing other core configurations/sizes please contact Sicame Engineering Dept

**MB21/3 & MB21/3/SHR Connector**

**Physical  
Dimensions:**



Connector Reference (Part Number)	Dimensions (mm)		
	'A'	'B'	'C'
MB21/3 & MB21/3/SHR (51810-12) (51810-01)	23.5	22.0	27.0

**Material:**

**Body:** Copper Alloy (MB21/3 & MB21/3/SHR)

**Shroud:** Polypropylene

**Test Specification:**

IEC1238-1: Test Reports TTR/267 and 275

**Fitting Instructions:**

1. Cut the cables to length and strip the core insulation equal to the length of the connector +3mm.
2. Thoroughly abrade all conductors to be jointed.
3. Align cores within connector and tighten screws on each side of the connector consecutively, until the shear heads have sheared.

**Note:**

\*Conductor cores 4mm<sup>2</sup> and below should be doubled, and if necessary doubled again, to achieve the necessary cross-sectional area.