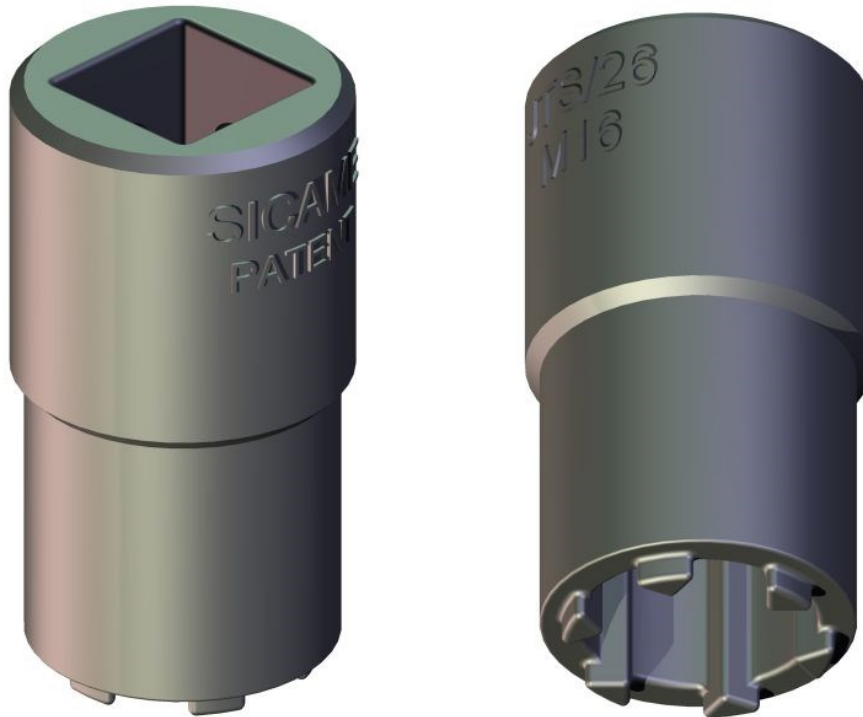


## ‘JTS/26’ & ‘JTS/27’

### MK2 Universal Shear Screw Sockets (1/2” Square Drive)



**Material:** Steel Casting

#### Range:

Product Reference (Part Number)	Dimensions (mm)		
	Screw Size	O/D	Length
JTS/26	M16	24	45
JTS/27 (3266-148)	M18	24	45

The Universal Screw Sockets have been designed to be used with the SED patented **MK2 (external drive)** universal multi shear screws. The tool ensures that the screw will always shear flush with the connector body and at the correct shear torque for the size of cable core.

The Sockets have been designed to be used with 1/2” square drive ratchet tools.

## Operating Instructions:

1. It is vially important that the 'JTS/26' & 'JTS/27' socket collar remains in contact with the connector body at all times.
2. Using the JTS/26 & JTS/27 socket torque tighten the shear screws at approximately 1 revolution at a time, until all the screws have sheared.

